

SHELBYVILLE, TENNESSEE

AL-5299 (FAA)

VOR/DME SYI 109.0 Chan 27	APP CRS 160°	Rwy Idg 5503 TDZE 799 Apt Elev 800
---	------------------------	---

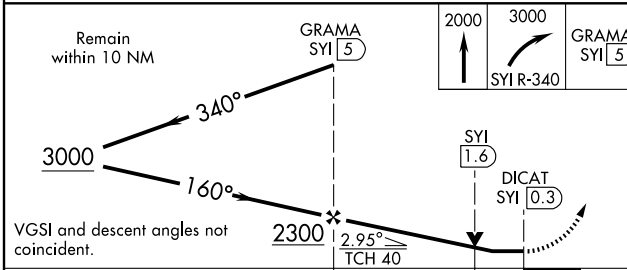
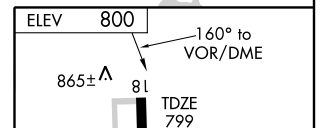
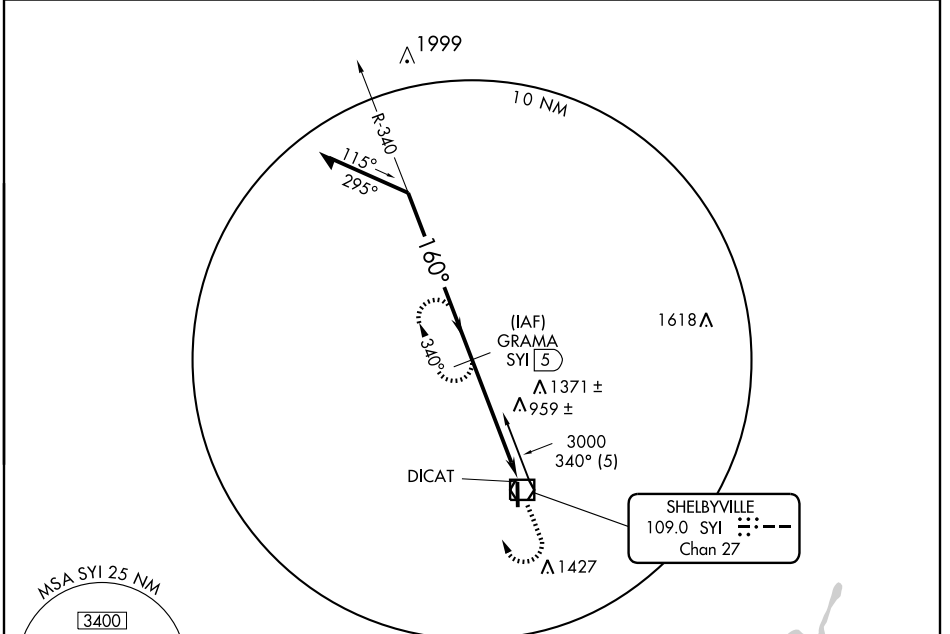
VOR/DME RWY 18

SHELBYVILLE/BOMAR FIELD-SHELBYVILLE MUNI (SYI)

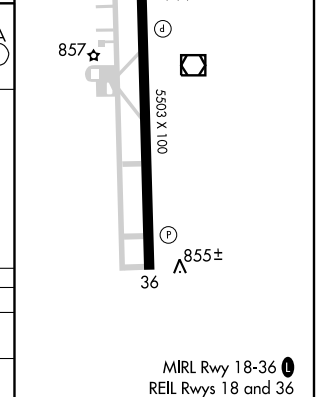
NA If local altimeter setting not received, use Nashville Intl altimeter setting and increase all MDAs 120 feet, and increase Cat C visibility 1/4 mile, Cat D 1/2 mile. VDP NA when using Nashville Intl altimeter setting.

MISSED APPROACH: Climb to 2000 then climbing right turn to 3000 via SYI R-340 to GRAMA/5 DME and hold.

AWOS-3 119.275	MEMPHIS CENTER 126.75 353.5	UNICOM 122.8 (CTAF) 0
--------------------------	---------------------------------------	---------------------------------



CATEGORY	A	B	C	D
S-18	1220-1	421 (500-1)	1220-1/4	421 (500-1/4)
CIRCLING	1260-1 460 (500-1)	1420-1 620 (700-1)	1420-1 3/4 620 (700-3/4)	1440-2 640 (700-2)



SHELBYVILLE, TENNESSEE
Amdt 5 10098

SHELBYVILLE/BOMAR FIELD-SHELBYVILLE MUNI (SYI)
35°34'N-86°27'W

VOR/DME RWY 18

MIRL Rwy 18-36 0
REIL Rwy 18 and 36

SE-1, 08 APR 2010 to 06 MAY 2010

SE-1, 08 APR 2010 to 06 MAY 2010