

SHELBYVILLE, TENNESSEE

AL-5299 (FAA)

VOR RWY 18

SHELBYVILLE/BOMAR FIELD-SHELBYVILLE MUNI (SYI)

VOR/DME SYI 109.0 Chan 27	APP CRS 152°	Rwy Idg 5503 TDZE 799 Apt Elev 800
---	------------------------	---

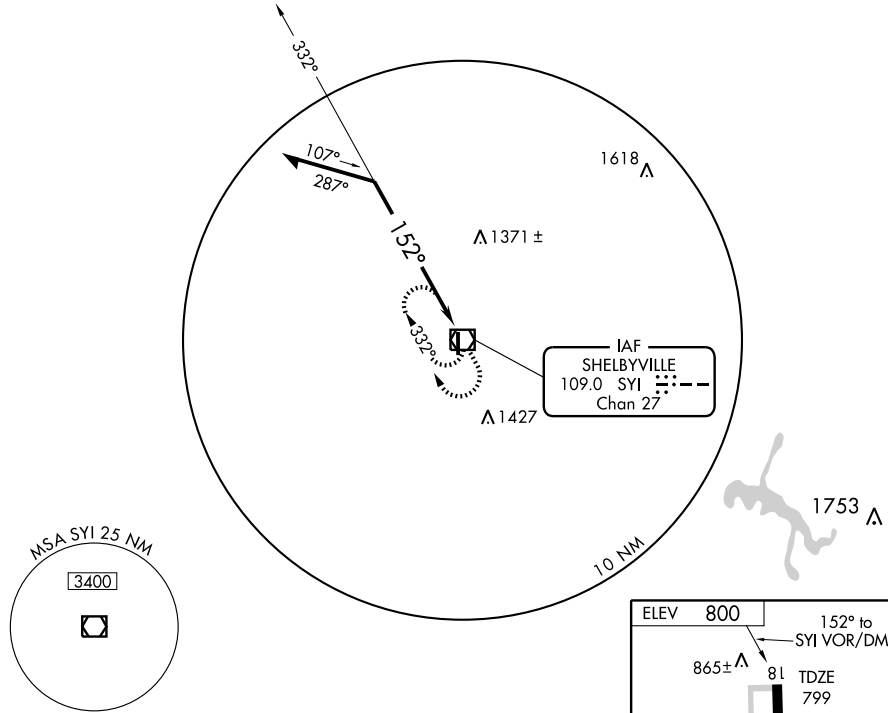
▼
▲ NA

MISSED APPROACH: Climbing right turn to 2800 in SYI VOR/DME holding pattern.

AWOS-3
119.275

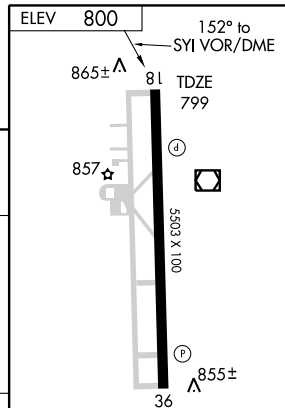
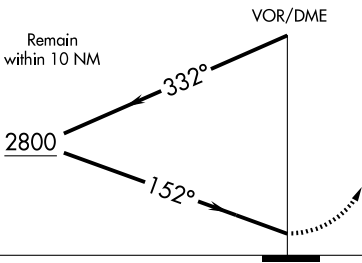
MEMPHIS CENTER
126.75 353.5

UNICOM
122.8 (CTAF) 0



SE-1, 08 APR 2010 to 06 MAY 2010

SE-1, 08 APR 2010 to 06 MAY 2010



CATEGORY	A	B	C	D
S-18	1360-1	561 (600-1)	1360-1½ 561 (600-1½)	1360-1¾ 561 (600-1¾)
CIRCLING	1360-1 560 (600-1)	1420-1 620 (700-1)	1420-1¾ 620 (700-1¾)	1440-2 640 (700-2)

MIRL Rwy 18-36 0
REIL Rwys 18 and 36

SHELBYVILLE, TENNESSEE
Amdt 5A 10098

SHELBYVILLE/ BOMAR FIELD-SHELBYVILLE MUNI (SYI)
35°34'N-86°27'W

VOR RWY 18