

# RNAV (GPS) RWY 4

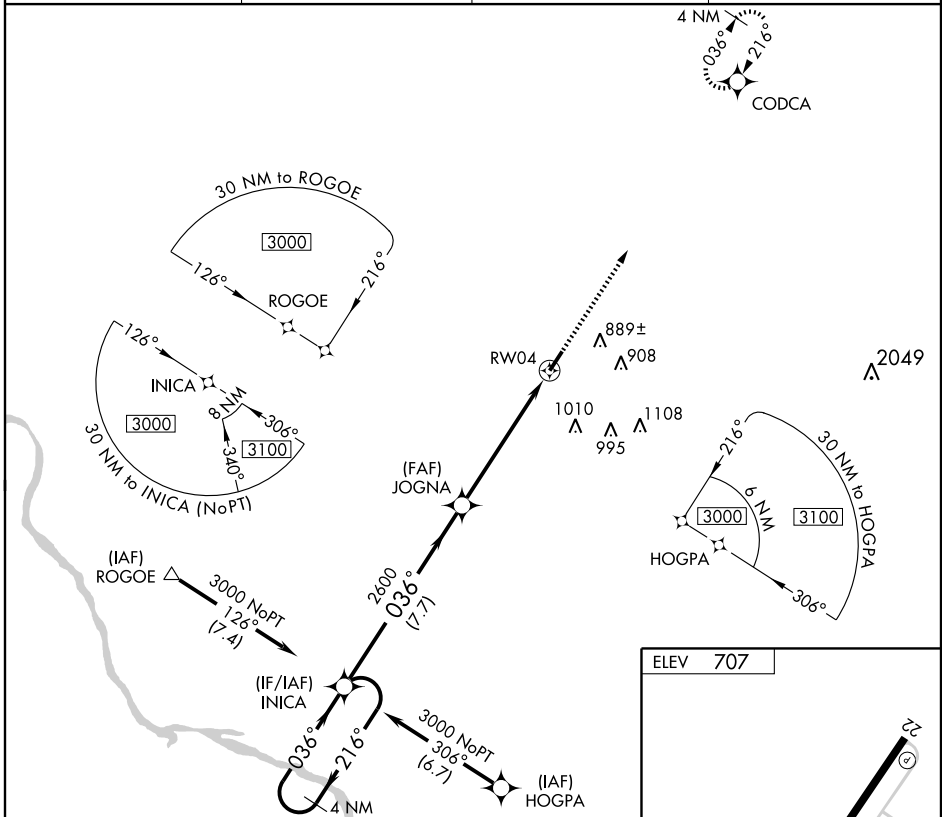
SPRINGFIELD ROBERTSON COUNTY (M91)

APP CRS <b>036°</b>	Rwy Idg <b>5005</b>
	TDZE <b>700</b>
	Apt Elev <b>707</b>

**▼** If local altimeter setting not received, use Nashville Intl altimeter setting and increase all MDAs 80 feet. VDP NA when using Nashville Intl altimeter setting.  
**▲ NA** DME/DME RNP-0.3 NA.

**MISSED APPROACH:** Climb to 3000 direct CODCA and hold.

AWOS-3 <b>120.675</b>	NASHVILLE APP CON <b>119.35 385.55</b>	GCO <b>121.725</b>	UNICOM <b>123.0 (CTAF) ①</b>
--------------------------	---	-----------------------	---------------------------------



SE-1, 08 APR 2010 to 06 MAY 2010

SE-1, 08 APR 2010 to 06 MAY 2010

4 NM Holding Pattern	INICA		JOGNA		3000	CODCA
	3000	← 216°	→ 036°	036°	1.1 NM to RWY 4	
VGSI and descent angles not coincident.			2600	3.05°	TCH 40	
	7.7 NM		4.7 NM		1.1	
CATEGORY	A	B	C	D		
RNAV MDA	1100-1 400 (400-1)			1100-1¼ 400 (400-1¼)		
CIRCLING	1140-1 433 (500-1)	1240-1 533 (600-1)	1240-1½ 533 (600-1½)	1300-2 593 (600-2)		

