

CENTERVILLE, TENNESSEE

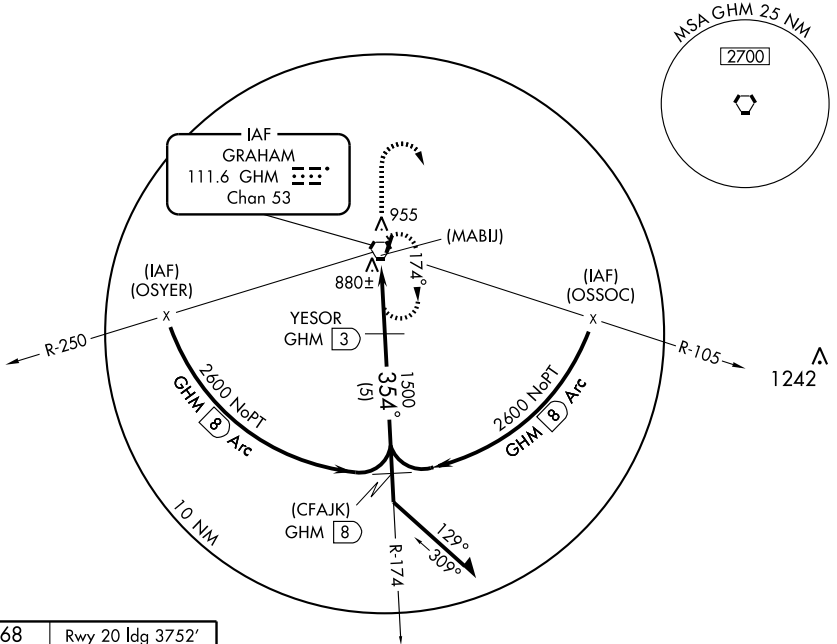
AL-5660 (FAA)

# VOR/DME or GPS RWY 2 CENTERVILLE MUNI (GHM)

|                                       |                        |   |
|---------------------------------------|------------------------|---|
| VORTAC GHM<br><b>111.6</b><br>Chan 53 | APP CRS<br><b>354°</b> | Rwy Idg <b>4002</b><br>TDZE <b>768</b><br>Apt Elev <b>768</b> |
|---------------------------------------|------------------------|---|

|   |   |
|---|---|
| <p><b>▼</b> Obtain local altimeter on CTAF, if not received use Nashville altimeter setting.</p> <p><b>▲ NA</b></p> | <p>MISSED APPROACH: Climb to 2600 then right turn direct GHM VORTAC and hold.</p> |
|---|---|

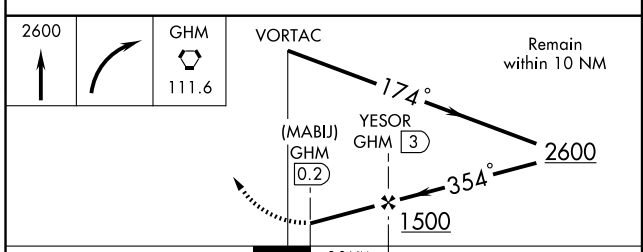
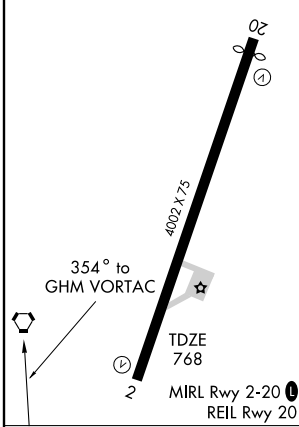
|   |   |
|---|---|
| <p>MEMPHIS CENTER<br/><b>125.85 381.4</b></p> | <p>UNICOM<br/><b>122.8 (CTAF) L</b></p> |
|---|---|



SE-1, 08 APR 2010 to 06 MAY 2010

SE-1, 08 APR 2010 to 06 MAY 2010

ELEV 768 Rwy 20 Idg 3752'



| CATEGORY                             | A                  | B           | C                       | D                       |
|--------------------------------------|--------------------|-------------|-------------------------|-------------------------|
| S-2                                  | 1140-1 372 (400-1) |             |                         | 1140-1¼<br>372 (400-1¼) |
| CIRCLING                             | 1240-1             | 472 (500-1) | 1240-1½<br>472 (500-1½) | 1320-2<br>552 (600-2)   |
| NASHVILLE ALTIMETER SETTING MINIMUMS |                    |             |                         |                         |
| S-2                                  | 1320-1 552 (600-1) |             | 1320-1½<br>552 (600-1½) | 1320-1¾<br>552 (600-1¾) |
| CIRCLING                             | 1420-1             | 652 (700-1) | 1420-1¾<br>652 (700-1¾) | 1420-2<br>652 (700-2)   |

CENTERVILLE, TENNESSEE  
Amdt 2 05020

35° 50' N-87° 27' W

# CENTERVILLE MUNI (GHM) VOR/DME or GPS RWY 2